



A W O R L D O F P O W E R



LINEA ALTERNATORI
PER GRUPPI ELETTOGENI
PORTATILI E TRAINABILI

PORTABLE
AND MOBILE GEN-SETS
ALTERNATORS LINE



Caratteristiche elettriche

Riferite a temperatura ambiente $<40^{\circ}\text{C}$,
altitudine $< 1000\text{ m s.l.m.}$, servizio continuo S1, $\text{cos}\phi=1$ per
gli alternatori monofasi,
 $\text{cos}\phi=0.8$ per gli alternatori trifasi.

Precisione di tensione:
per gli alternatori monofasi (eccetto R80) $\pm 6\%$
per gli alternatori trifasi $\pm 5\%$

Bassa distorsione armonica

Cuscinetti a doppio schermo, lubrificati a vita

Norme di riferimento:
EN 60034-1 (IEC 34.1) • EN 60204-1 • EN 292-1
EN 292-2 • EN 55011 • EN 50081-1 • EN 50082-1
altre su richiesta.

Per le saldatrici: EN 60974-1 • EN 50199

Protezione: secondo le norme EN 60034-5 (IEC 34.5)
ed EN 60529 (IEC 529).

Conformi alle direttive vigenti in materia di sicurezza
e compatibilità elettromagnetica: CEE 73/23 • CEE 98/37
CEE 89/336.

Electrical characteristics

*Referred to following conditions:
environmental temperature $<40^{\circ}\text{C}$,
height $< 1000\text{ m a.s.l.}$, continuous duty S1,
 $\text{cos}\phi=1$ for single phase alternators,
 $\text{cos}\phi=0.8$ for three-phase alternators.*

*Voltage accuracy:
for single phase alternators (except R80) $\pm 6\%$
for three-phase alternators $\pm 5\%$*

Low harmonic distortion

Bearings: double screen, life lubricated

*Standards:
EN 60034-1 (IEC 34.1) • EN 60204-1 • EN 292-1
EN 292-2 • EN 55011 • EN 50081-1 • EN 50082-1
others on request.*

For welders: EN 60974-1 • EN 50199

*Protection: according to EN 60034-5 (IEC 34.5)
and EN 60529 (IEC 529).
According to the security and EMC requirements
of the ECC directives: EEC 73/23 • EEC 98/37 • EEC 89/336.*

Saldatrici rotanti a corrente continua a 2 poli con spazzole.
 Protezione: IP 21, su richiesta IP23
 Tipo di elettrodi saldabili: tutti i tipi inclusi basici e cellulosici
 Fornita di protezione termica autoripristinabile contro i sovraccarichi
 Utilizzabile anche come alternatore
 Forme costruttive: IM B34 - B3/B14, IM B35 B3/B9, IM B35 - J609b, SAE 5

2 poles direct-current brushes rotating welders.
 Protection: IP 21, on request IP23
 Weldable electrodes: all types, included basic and cellulosic.
 Supplied with autoresettable thermal breaker against overload
 Can also be used as alternator
 Shape: IM B34 - B3/B14, IM B35 B3/B9, IM B35 - J609b, SAE 5



Caratteristiche tecniche saldatrice / Technical characteristics welder

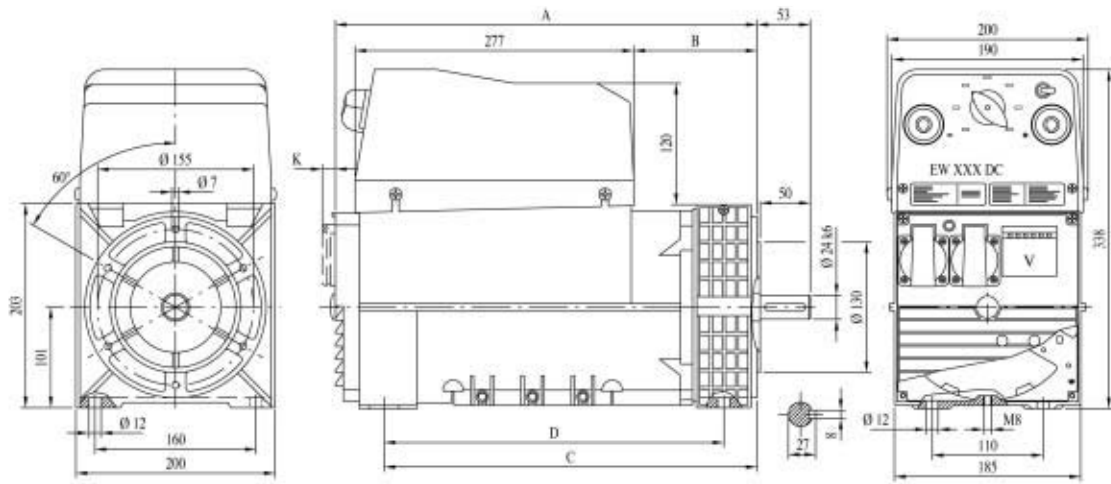
| Tipo Type | Codice Code | Velocità Speed rpm | Massa Mass IMB35 kg | Corrente di saldatura DC Welding current DC A | Tensione di innescò Strike voltage V | Tensione di saldatura Welding voltage V | Servizio Duty | Potenza assorbita Driving power |
|------------|---------------|-----------------------|---------------------------|---|--|---|-------------------------|------------------------------------|
| EW 170 DC | 96201125.A2 | 3000 | 34 | 45÷170 | 80 | 21.8÷26.6 | 170 A•50 % | 7.5 kW • 9.5 Hp |
| EW 200 DC | 96201180.A2 | 3000 | 43 | 50÷200 | 75 | 22÷28 | 200 A•35 % / 170 A•60 % | 8.5 kW • 11.5 Hp |
| EW 220 DC | 96301180.X2 | 3000 | 44 | 40÷220 | 73 | 21.5÷28.8 | 220 A•35 % / 170 A•60 % | 9.0 kW • 12.5 Hp |
| EW 220 MDC | 96201180.A206 | 3000 | 44 | 40÷220 | 76 | 21.6÷28.6 | 220 A•35 % / 170 A•60 % | 9.0 kW • 12.5 Hp |
| EW 190 DC | 96201125.F2 | 3600 | 34 | 50÷190 | 82 | 22÷27.6 | 190 A•50 % | 8.0 kW • 11.0 Hp |
| EW 210 DC | 96201180.F2 | 3600 | 43 | 50÷210 | 82 | 22÷28.4 | 210 A•35 % / 170 A•60 % | 10.0 kW • 13.0 Hp |
| EW 240 DC | 96301180.Q2 | 3600 | 44 | 50÷240 | 90 | 22÷29.6 | 240 A•35 % / 180 A•60 % | 11.0 kW • 15.0 Hp |
| EW 240 MDC | 96201180.F206 | 3600 | 43 | 50÷240 | 90 | 22÷29.6 | 240 A•35 % / 180 A•60 % | 11.0 kW • 15.0 Hp |

Caratteristiche tecniche alternatore / Technical characteristics alternator

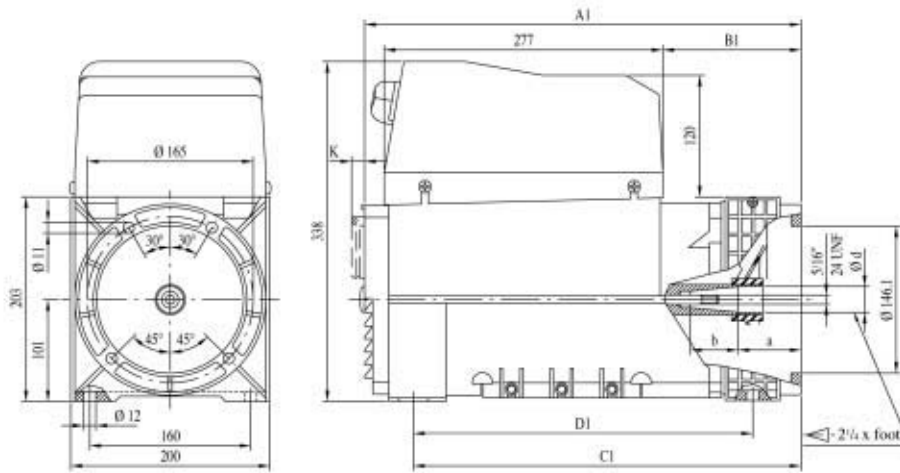
| Tipo Type | Codice Code | Trifase (cosφ=0.8) • Three phase (cosφ=0.8) | | | | Monofase (cosφ=1) • Single phase (cosφ=1) | | | |
|------------|---------------|---|-----------------------|--|---------------------------|---|-----------------------|--|---------------------------|
| | | Potenza Power (S1) - kVA | Tensione Voltage V | Corrente (max S1) Current (max S1) A | Frequenza Frequency Hz | Potenza Power (S1) - kVA | Tensione Voltage V | Corrente (max S1) Current (max S1) A | Frequenza Frequency Hz |
| EW 170 DC | 96201125.A2 | - | - | - | - | 3.0 | 115 / 230 | 26 / 13 | 50 |
| EW 200 DC | 96201180.A2 | - | - | - | - | 4.0 | 115 / 230 | 30.7 / 17.4 | 50 |
| EW 220 DC | 96301180.X2 | 6.5 | 400 | 9.4 | 50 | 3.5 | 231 | 15.2 | 50 |
| EW 220 MDC | 96201180.A206 | - | - | - | - | 5.0 | 115 / 230 | 43.5 / 21.7 | 50 |
| EW 190 DC | 96201125.F2 | - | - | - | - | 3.5 | 120 / 240 | 29.1 / 14.6 | 60 |
| EW 210 DC | 96201180.F2 | - | - | - | - | 4.0 | 120 / 240 | 33.3 / 16.7 | 60 |
| EW 240 DC | 96301180.Q2 | 7.5 | 416 | 10.4 | 60 | 3.5 | 240 | 14.6 | 60 |
| EW 240 MDC | 96201180.F206 | - | - | - | - | 5.5 | 120 / 240 | 46 / 23 | 60 |

Dimensioni / Dimensions

| Tipo Type | IMB34 • IMB35 (C. 23 - C. 30) | | | | IMB35 - J609b | | | |
|------------|-------------------------------|-----|-----|-----|---------------|-----|-----|-----|
| | A | B | C | D | A1 | B1 | C1 | D1 |
| EW 170 DC | 365 | 69 | 315 | 283 | 381 | 85 | 331 | 283 |
| EW 200 DC | 420 | 124 | 370 | 338 | 436 | 140 | 386 | 338 |
| EW 220 DC | 420 | 124 | 370 | 338 | 436 | 140 | 386 | 338 |
| EW 220 MDC | 420 | 124 | 370 | 338 | 436 | 140 | 386 | 338 |
| EW 190 DC | 365 | 69 | 315 | 283 | 381 | 85 | 331 | 283 |
| EW 210 DC | 420 | 124 | 370 | 338 | 436 | 140 | 386 | 338 |
| EW 240 DC | 420 | 124 | 370 | 338 | 436 | 140 | 386 | 338 |
| EW 240 MDC | 420 | 124 | 370 | 338 | 436 | 140 | 386 | 338 |



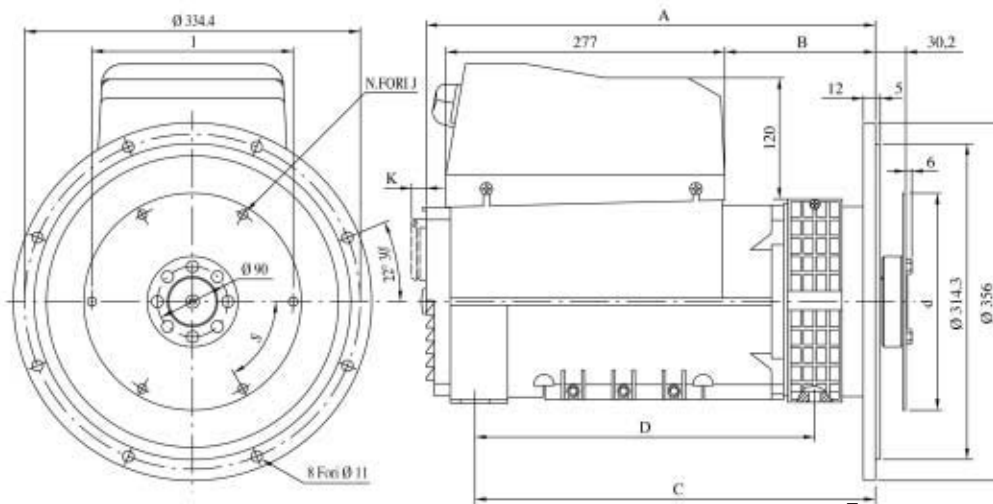
Forma costruttiva / Shape IM B34 - B3/B14 cod.E



| Cono/Cone | d | a | b | cod. |
|-----------|-------|------|------|------|
| 22,14 | 22,14 | 81 | 32 | D |
| 25,4 | 25,4 | 63,5 | 49,5 | D |
| 35 | 30 | 39 | 72 | F |

| | K |
|-------------------------------|----|
| Prese Schuko / Schuko sockets | 16 |
| Prese CEE / CEE sockets | 47 |

Forma costruttiva / Shape IM B35 - J609b cod.D/F

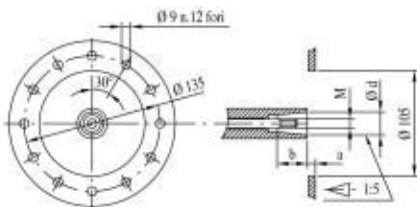


| Giunto a dischi Disk joint | | | | | | |
|-------------------------------|------|-------|-------|--------|---|-----|
| SAE | L | d | I | N.FORI | J | S |
| 6.5 | 30.2 | 215.9 | 200 | 6 | 9 | 60° |
| 7.5 | 30.2 | 241.3 | 222.2 | 8 | 9 | 45° |

| Tipo Type | Da - From IMB35 C.30 | | | |
|----------------|-------------------------|-----|-----|-----|
| | A' | B | C | D |
| EW170DC | 377 | 81 | 327 | 283 |
| EW190DC | 377 | 81 | 327 | 283 |
| EW200-220(M)DC | 432 | 136 | 382 | 338 |
| EW210-240(M)DC | 432 | 136 | 382 | 338 |

| Tipo Type | Da - From IMB35 J609b C.35 | | | |
|----------------|-------------------------------|-----|-----|-----|
| | A' | B | C | D |
| EW170DC | 393 | 97 | 343 | 283 |
| EW190DC | 393 | 97 | 343 | 283 |
| EW200-220(M)DC | 448 | 152 | 398 | 338 |
| EW210-240(M)DC | 448 | 152 | 398 | 338 |

Forma costruttiva / Shape SAE 5 cod.5



| d | a | b | M | cod. |
|----|----|----|-----|------|
| 23 | 8 | 30 | M8 | A |
| 30 | 16 | 30 | M14 | B |

Forma costruttiva / Shape IM B35 - B3/B9 cod.A/B

